



HEARTWOOD
HOMES

Blueberry Close

Offers Over £275,000

1 1 1



This chain free property is perfectly located within a quite cul-de-sac location, positioned on excellent bus routes and still within walking distance of St Albans City Centre.

You enter through your private entrance hall with a spacious storage cupboard, loft access, and a separate large utility cupboard that includes a washing machine—ensuring ample storage space.

The property also features a fully fitted kitchen with space for all modern day essential white goods, and a beautifully maintained bathroom.

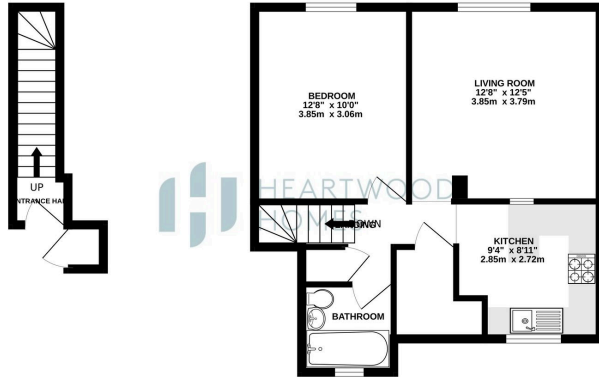
The large double bedroom and separate living area make this home perfect for first-time buyers or investment purchasers.

Additionally, the property is conveniently located near local amenities and includes the added advantage of a driveway.



GROUND FLOOR
52 SQ. FT. (4.8 SQ. M.) APPROX.

1ST FLOOR
477 SQ. FT. (44.4 SQ. M.) APPROX.



TOTAL FLOOR AREA: 529 sq ft. (49.1 sq m.) approx.
 Whilst every attempt has been made to ensure the accuracy of the information contained herein, measurements of areas, windows, rooms and any other items are approximate and no responsibility is taken for any error, omission or misstatement. This plan is for guidance purposes only and should not be used as a basis for any prospective purchase. The services, systems and appliances shown here are not intended and no guarantee is given as to their operability or efficiency can be given.
 Made with HomeByDesign



- Close to excellent road and bus links
- Great size accommodation
- Chain free
- Large loft
- Parking
- Top floor apartment
- Abbey View
- EPC tbc

